

## AWNING SAVER

Recently, a good friend of ours, another Sunnybrook owner, lost his awning somewhere on I-5 near Highway 58.

This spurred me into action. Actually, Cricket did the spurring, no trips until we had an awning saver in place! 😊 Anyway, I did some looking around and found several different designs, but they all seemed a little ungainly for me. I wanted something that looked a little cleaner. This is what I came up with, it's similar to one I found while searching the web, but modified to fit our Sunnybrooks with their A&E awnings.

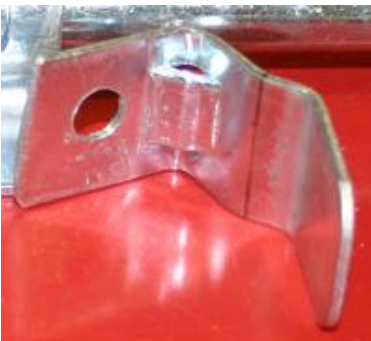


The parts needed to build it cost about 7 or 8 dollars, but the peace of mind is priceless. You'll need a 6 inch barrel bolt, 4 - 1/4 x 20 x 1" bolts, preferably stainless steel, w/matching nylon locking nuts, a 1/4 x 6" eye bolt and a piece of spring steel about 1/2 x 1-1/2".



First, remove the throw from the barrel bolt. It's a press fit, so just twist and pull until something gives. Remove the bolt from the barrel and cut the barrel to fit the width of your awning arm. Then cut off almost all the threaded portion of the eyebolt, leave about 1/8 to 1/4". Test fit the width of your cut down barrel before putting the barrel bolt back together. Depending upon the brand of barrel bolt you got, you may have to drill some holes into it for your mounting bolts.

Next, grind the threaded portion of the eyebolt until it fits into throw hole in the bolt of the barrel bolt. Remember this is a press fit, so go slow! If you grind too much, you'll either have a shorter throw or get to practice again with a new eye bolt. Also, at this point, make sure that you've put the bolt back into the barrel before putting your ground down eye bolt in, or you'll get some more practice with that press fit. Don't ask me how I know this! :-). You might also want to install the eye bolt so that the eye sits at 90 degrees to the barrel bolt. It makes it easier to grab with your awning tool.



Now you'll need to bend the small piece of spring steel into shape. It will be placed under the bottom right bolt, in order to lock the eye bolt in place while traveling.

In the process of installation, I had to take the awning up and down several times to get the brackets to fit just right.

Once you have everything installed, mark the position of the bolt against the roller tube. Be sure to do this when the awning is fully closed, no need for extra holes in the end of the tube. Drill a hole in the roller tube slightly larger than the bolt.

When everything is put back together, you may have to cut the ends off two of the mounting bolts, I used a Dremel with a cut off wheel attached. The bottom two bolts will likely interfere with the travel of the locking part of the awning arm.

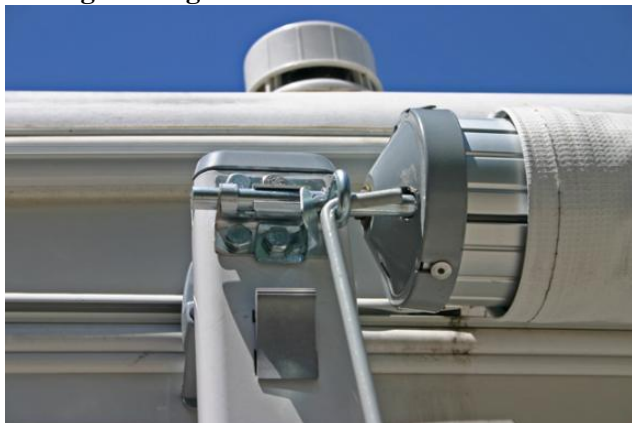
**Awning Opened**



**Awning Rolled Up**



**Moving Awning Saver into Roller**



**Locking Awning Saver into Place**



**Eye Bolt Locked Down**

