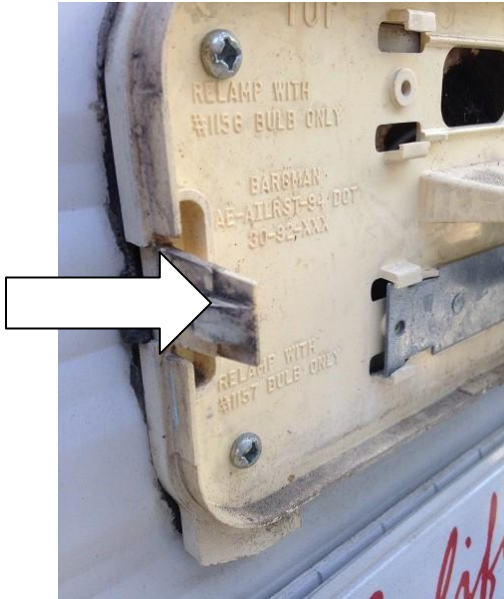
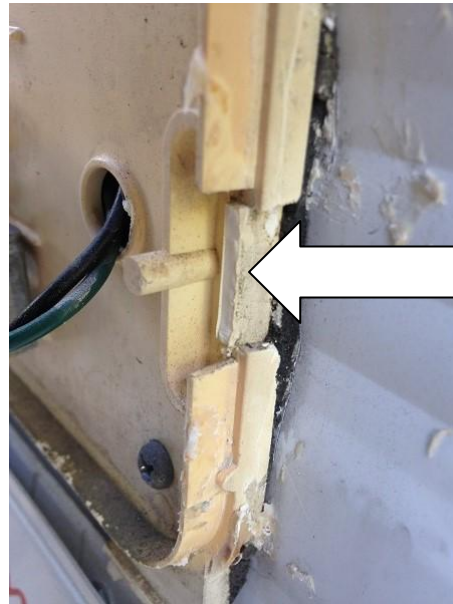


Tail Light Repair

Recently while removing one of the tail light lens' on my 5th wheel to replace a burned out lamp, one of the tabs that holds the lens on broke off. My first reaction was now I have to buy a complete new light fixture. Upon a closer inspection I was able to repair the existing fixture and will never have to deal with the tabs breaking off again.



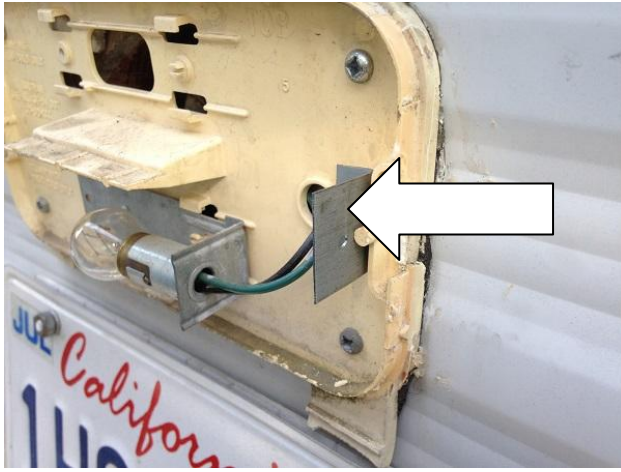
The tab on the left side was ok.



The brittle tab on the right side broke off.



This is the small "L" bracket I made from some scrap metal and drilled 2 holes, one to mount the bracket to the existing tail light housing and the other to anchor the lens.



The bracket is attached with a #8 x 1" self tapping screw to line up with an existing hole in the lens. This is the hole that the tab would have snapped into.



The finished project. The lens cover was attached using a #8 x 1" truss head sheet metal screw and a neoprene sealing washer to seal the tab hole.

Now the next time I need to change a bulb, it will be simple to remove the screw and replace without having to worry about breaking a tab on the aging brittle fixture.